

swiftlane.com



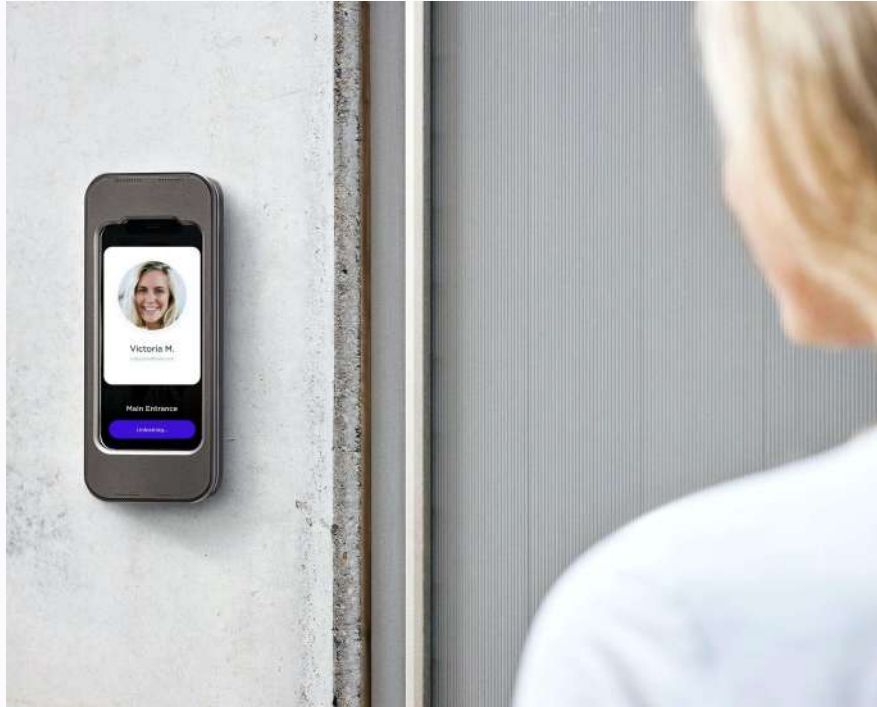
SWIFTLANE

Secure, Touchless Access Control Platform

Swiftlane Enterprise Access Control and Intercom Overview



[Youtube link](#)



Customers



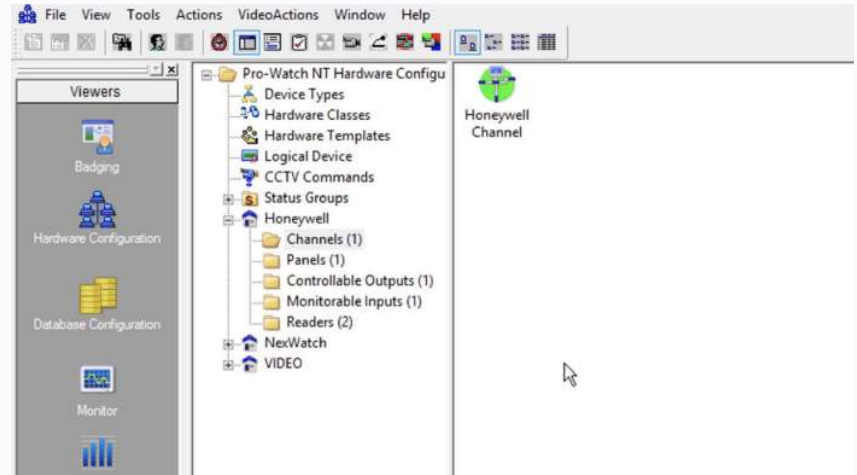
Traditional Access Control Is Limiting

- Products focused on cards and cameras
- Requires huge overhead of access management
- Not a strong alignment with customer needs



Traditional Workflow

- Create physical credentials for everyone
- Operate a local Windows based legacy software
- Cannot manage access remotely
- Does not handle visitors, deliveries, traveling employees
- Constant daily overhead of managing lost and forgotten card access



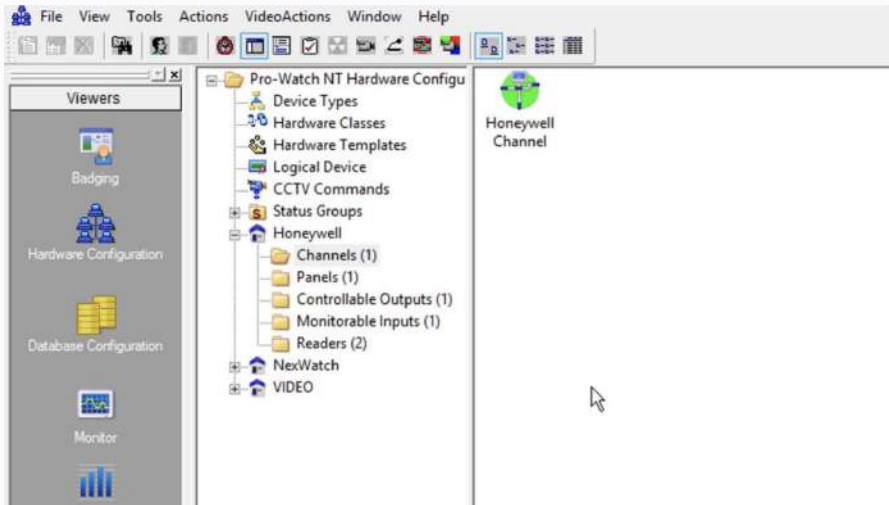
Security Companies Sell Hardware But Not intelligent Software

- Sales channels are focused on selling cards and cameras
- Lack understanding of software systems needed to simplify security management
- Cumbersome legacy software makes security management challenging, technically complex, and frustrating

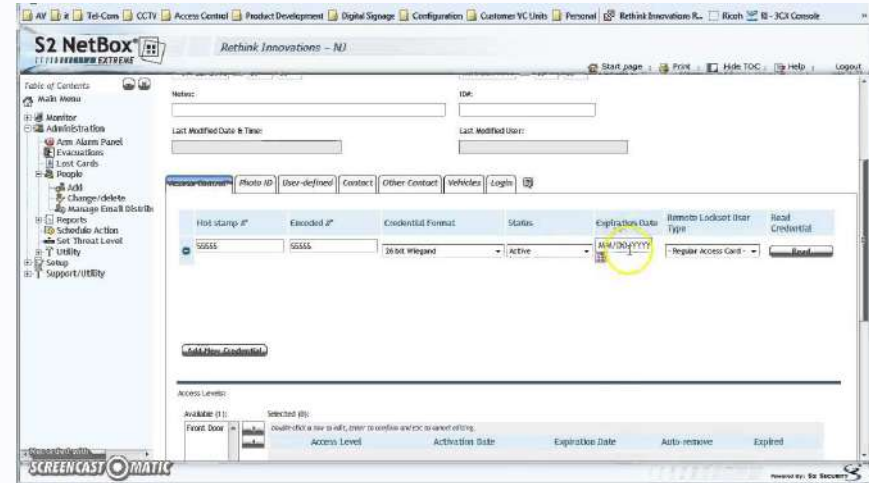


Access Management Systems Are Cumbersome and Insecure

- Legacy interfaces with limited functionality
- Takes weeks of technical training to operate
- Running on standalone Windows machines



Honeywell Prowatch



S2 System



Swiftlane Overview

A modern, all-in-one access control system

Swiftlane

- Multi-modal access methods: key cards, face recognition, mobile, PIN
- Built in video intercom: Communicate with visitors and remotely unlock doors
- Can be managed from the cloud remotely
- Grant/revoke access remotely and instantly
- Designed to manage multiple office locations centrally. Built for scale.
- Touchless access credentials

Traditional System

- Card access
- No visitor management
- No delivery management
- No face, mobile, or PIN access
- No cloud-based remote management
- Requires full time onsite staff for
- Requires a trained technical physical security professional onsite full-time



Face Access: Delightful, Simple, Touchless

- 60-second self-enrollment via the Swiftlane app
- Open doors using touchless face unlock
- Continuous learning with every access
- Instant access to any number of doors
- Strong data and privacy guards (SOC 2)
- Remote access grant
- Mobile and pin unlock options for non-face recognition users

Technical Details

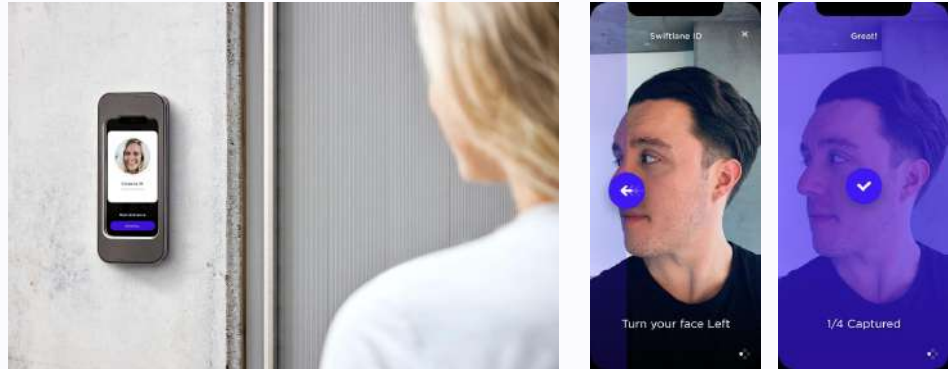
Distance: 3 feet

2D and 3D depth checks / Anti-spoofing

Low light auto flash

Deep learning based face recognition

Secure, encrypted biometrics transfer & storage



Enroll instantly from your phone, then walk up to the Access Point to unlock the door



Mobile Access: Reliable, Convenient, Secure

- Easy mobile access over Bluetooth (BLE)
- Remote unlock for admins
- Fast, reliable experience that works
- Admin can pick up visitor calls + remote unlock
- Android and iOS

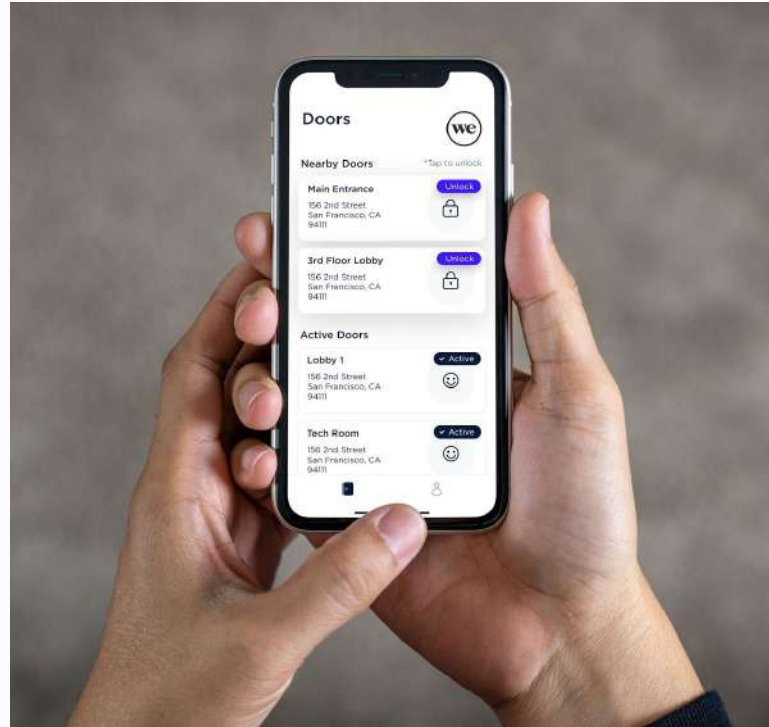
Technical Details

Private key based encrypted communications

Private key never leaves the person's phone

TLS/HTTPS based API communication

Control permissions with detailed user groups



Card + PIN Readers



SWIFTLANE



Video Intercom: Receive Video Calls and Remotely Unlock Doors

Visitor Video

Receive video calls from web or app

Empower Your Team

Free up the office team from being tied to the front desk. Pick up calls from a mobile phone and remotely unlock doors from anywhere.

Scalable

Assign and call multiple office managers at once

High Security

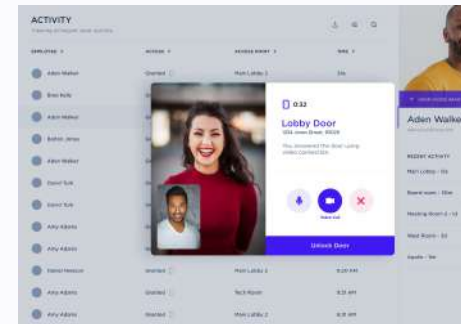
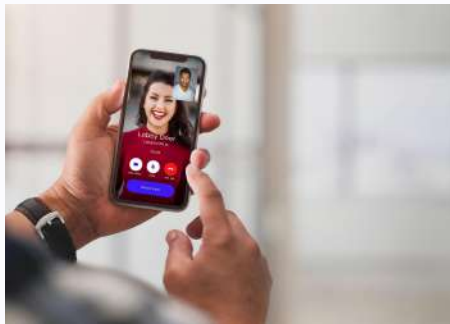
Verify the person on video before unlocking a door

Easy Install

Takes only a couple of hours for install

Reduce Operational Costs

Manage dozens of doors centrally from one dashboard



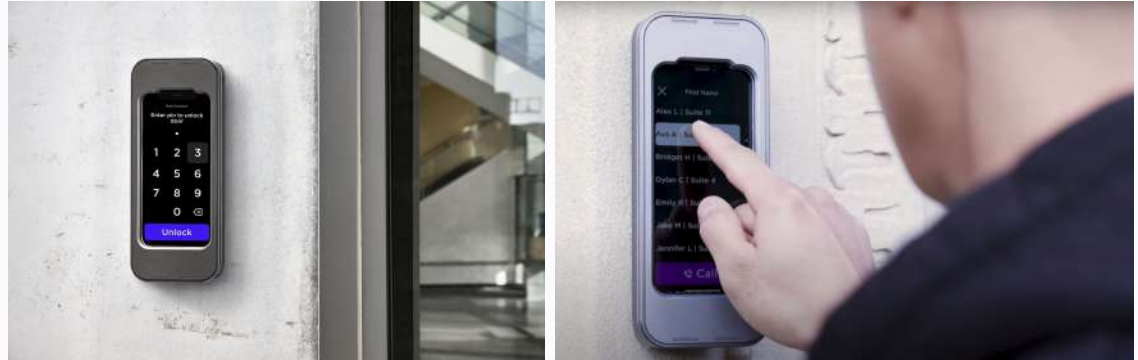
Easily Create Flexible Intercom Options

- Front desk intercom
- Intercom tenant directory
- Route calls to multiple people
- Assign PIN codes to visitors



Video Intercom: Receive Video Calls and Remotely Unlock Doors

- Two-way video / one-way video
- Multi-tenant directory option
- Virtual front desk from anywhere
- Remote door unlock
- No master stations needed
- Centrally manage multiple sites
- Pick up calls on phone or computer



Live Access Feed With Photo and Video Logs

Swiftlane Inc

- Activity Feed
- Users
- User Groups
- Sites & Access Points
- Visitor Access
- Schedules
- Health Check
- Integrations
- Security Settings
- Reports
- Key Cards
- Hardware
- Audit Logs
- IOS Devices
- Workspaces
- Door Controllers
- CC Users
- VMS

Activity

Filters: Workspace Users Access Point Site Granted Access Type Start date/time End date/time

User	Access	Access point / Site	Access Type	Time	Timestamp
William Murphy	Granted	Front Door 65 / 65 Langton	Mobile Only	5 hours ago	2021-09-07 18:05:00
William Murphy	Granted	Front Door 65 / 65 Langton	Remote Unlock	5 hours ago	2021-09-07 18:05:00
gerardo barroeta	Granted	Front Door 65 / 65 Langton	Face only	8 hours ago	2021-09-07 15:27:57
William Murphy	Granted	Front Door 65 / 65 Langton	Mobile Only	10 hours ago	2021-09-07 13:24:13
William Murphy	Granted	Front Door 65 / 65 Langton	Remote Unlock	10 hours ago	2021-09-07 13:24:13
Jack Al-kawahati	Granted	Front Door 65 / 65 Langton	Key Card	10 hours ago	2021-09-07 13:07:03
Jack Al-kawahati	Granted	Front Door 65 / 65 Langton	Key Card	11 hours ago	2021-09-07 12:34:02
gerardo barroeta	Granted	Front Door 65 / 65 Langton	Face only	11 hours ago	2021-09-07 12:11:56
Jack Al-kawahati	Granted	Front Door 65 / 65 Langton	Face only	12 hours ago	2021-09-07 11:44:35
Jack Al-kawahati	Granted	Front Door 65 / 65 Langton	Face only	12 hours ago	2021-09-07 11:44:30
drew marquiss	Granted	Front Door 65 / 65 Langton	Mobile Only	12 hours ago	2021-09-07 11:42:00
drew marquiss	Granted	Front Door 65 / 65 Langton	Remote Unlock	12 hours ago	2021-09-07 11:42:00
Jack Al-kawahati	Granted	Front Door 65 / 65 Langton	Face only	12 hours ago	2021-09-07 11:37:01
Jack Al-kawahati	Granted	Front Door 65 / 65 Langton	Face only	12 hours ago	2021-09-07 11:24:06
gerardo barroeta	Granted	Front Door 65 / 65 Langton	Face only	12 hours ago	2021-09-07 11:14:21
William Murphy	Granted	Front Door 65 / 65 Langton	Remote Unlock	13 hours ago	2021-09-07 11:04:15
gerardo barroeta	Granted	Front Door 65 / 65 Langton	Face only	14 hours ago	2021-09-07 09:15:05
drew marquiss	Granted	Front Door 65 / 65 Langton	Mobile Only	14 hours ago	2021-09-07 09:06:53

Jack Al-kawahati
jack@lattis.io a day ago

Granted
Timestamp
2021-09-06 12:11:32

Unlock

Add Note

Outside - Left Camera

Inside Camera



Detailed Access Configuration

G Swiftlane Inc

- Activity Feed
- Users
- User Groups**
- Sites & Access Points
- Visitor Access
- Schedules
- Health Check
- Integrations
- Security Settings
- Reports
- Key Cards
- Hardware
- Audit Logs
- iOS Devices
- Workspaces
- Door Controllers
- CC Users
- VMS

USER GROUPS

[Add Group](#) [Add Member](#)

- Remote Unlock** (12 Members)
 - Admin (6 Members)
 - EMP Site (2 Members)
 - EVERYONE (47 Members)
 - Vendors (2 Members)
 - Everyone (8 Members)
 - Active Users (10 Members)
 - Server room

Users **Access Points**

Access Point Name	Description	Address	Schedule	Remove
Intercom Front Door	Intercom Test Door 1	USA	Atui test	
Swift Mike's Office	Swift Mike's Office	65 Langton St	Select Schedule	
Parking Entrance	Parking Entrance	26 Lake Street, St. Joseph, MI, USA	Select Schedule	
Main Entrance	Main Entrance	152 Ashbury Drive, Novi, Michigan, USA	Select Schedule	
First Floor 65	First Floor Entrance	65 Langton St	Select Schedule	
Front Door 65	Front door at 65 Langton	65 Langton St	Select Schedule	
Local Test Site	Local Test Site	65 Langton St	Select Schedule	

[Support](#)



Flexible and Scalable Hardware Deployment



Integrations to Automatically Enroll and Remove Users

Google G Suite

OKTA

Azure Active Directory

- Automatically enroll users into Swiftlane when they are added to these systems.
- Avoid access leaks. Swiftlane automatically revokes access when users are suspended in these systems.
- Reduce operational costs and automate your security management.

The screenshot displays the 'INTEGRATIONS' section of a user interface. It features three integration cards arranged horizontally. Each card has a header with the provider's logo, a sub-header with the provider name, a main heading for the integration type, a brief description, and two buttons: 'Configure' and 'Uninstall'.

- Okta:** Header with 'okta' logo. Sub-header 'Okta'. Main heading 'Import users from Okta'. Description: 'You will need admin account in Okta'. Buttons: 'Configure' and 'Uninstall'.
- G Suite:** Header with 'G Suite' logo. Sub-header 'GSuite'. Main heading 'Import users from GSuite'. Description: 'You will need admin account in GSuite'. Buttons: 'Configure' and 'Uninstall'.
- Azure Active Directory:** Header with 'Microsoft Azure' logo. Sub-header 'Azure Active Directory'. Main heading 'Import users from Azure Active Directory'. Description: 'You will need admin account in Azure Active Directory'. Buttons: 'Configure' and 'Uninstall'.

Strong Privacy and Security: SOC 2 and HIPAA Certified

- Swiftlane is designed to protect your privacy. You own the data.
- Encrypted communications over HTTPS/TLS
- Encrypted storage
- Encrypted storage for biometrics data
- Strong access restrictions to data
- We don't sell your data, our business is providing security



Visitor Access Via Swiftlane and Envoy Integration

Integration With Envoy

When visitors are invited through Envoy you can grant them temporary access to selected doors.

Details

- Face, mobile, and temporary link based access
- Limit to specific doors and entrances
- Limited to a configured access window



Swiftlane Health Check: Comprehensive COVID-19 Safety Solution

Provide safe access to your workplace and buildings

- Touchless Access Control
- Remotely grant and revoke access permission
- Health Check survey for employees in app

Ensure social distancing

- Capacity limits to avoid overcrowding
- Get alerted on capacity limits

Enable employee safety

- Health data stays on the user's phone

Maintain privacy and eliminate liability

- No health records get stored on paper records or our servers
- Data remains on the user's phone

Reduce operational costs arising from COVID

- More operationally efficient

NAME	EMAIL	TEMP	DATE
Aden Walker	aden@acmecorp.com	98°	5/2/20 - 10:34AM
Amy Adams	amya@acmecorp.com	106°	5/2/20 - 10:15AM
Brea Kelly	breek@acmecorp.com	98°	5/2/20 - 10:03AM
Brandon Michaels	bmichaels@acmecorp.com	98°	5/2/20 - 9:47AM





What Our Customers Are Saying



Swiftlane was very easy to deploy, I couldn't believe it! Users like the simple onboarding process. I got very positive feedback from the employees working there.

Richard Chang, Head of Security & Compliance, California Water Service Group



It provides cost savings and efficiencies by not having to buy key cards or keys. I love the feature of being able to have a guest user call and be let in, and get a visual of who that person is instead of needing to pay for additional security cameras. Support has been great. You get almost instantaneous answers to calls or emails. Once the system was installed, configured to remove any kinks, and set up correctly, I haven't had to do anything for the past several months.

Donald Bowers, Head of Security, Washington Water Service



QUESTIONS?

We'd love to learn more about your business and offer a free demo. Please reach out to sales@swiftlane.com or call 833-607-9438.

[swiftlane.com](https://www.swiftlane.com)